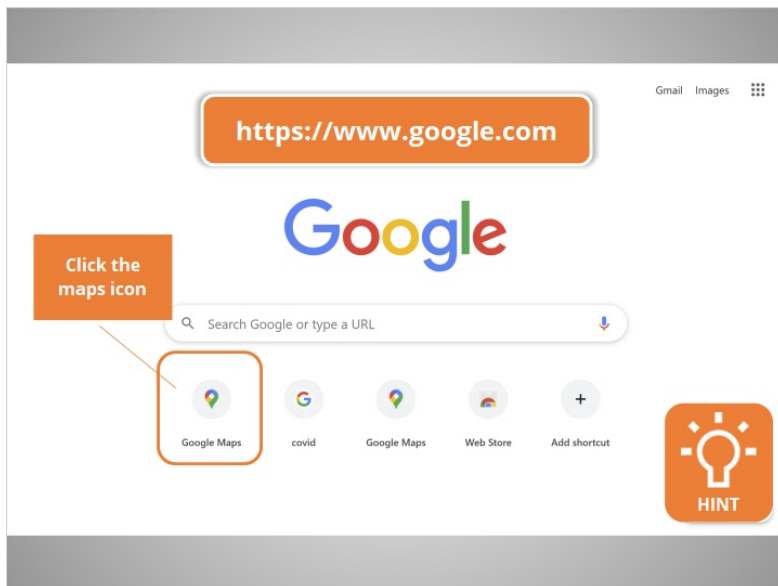


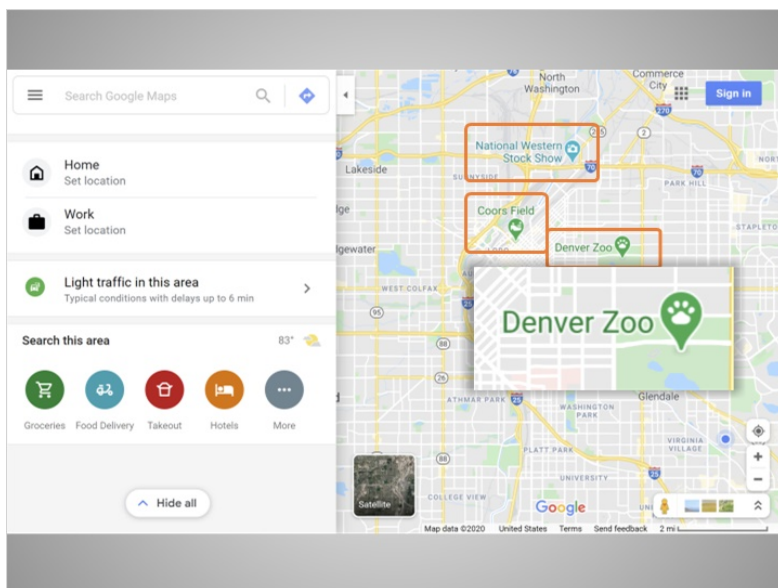
Search and Get Directions



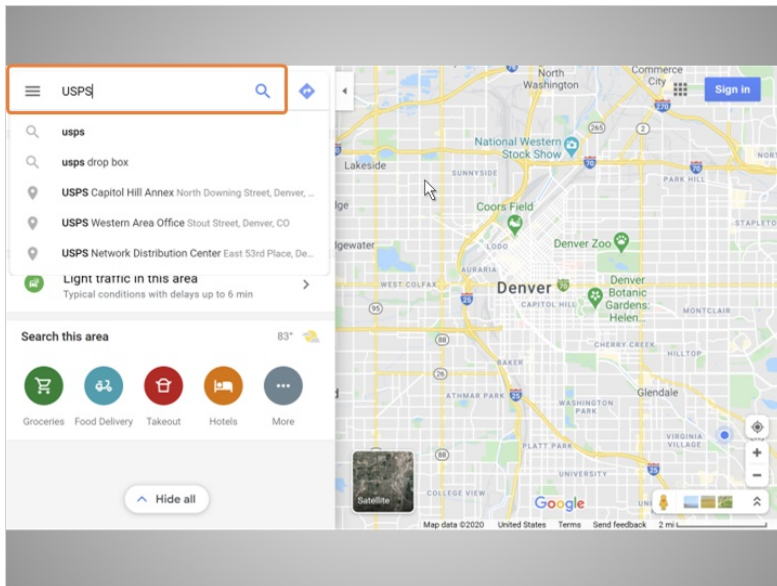
Ana is at the library using the computers there. She's unfamiliar with this part of the city, and she needs to go to the post office. She's going to use Google Maps for the first time, to help her get around!



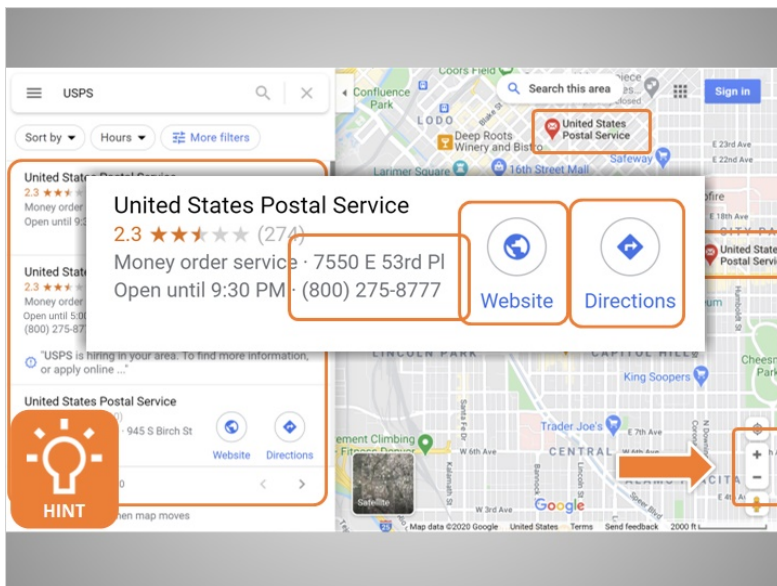
Ana is on the Google homepage. From here, she can click on “Google Maps” below the search bar. Would you help Ana by clicking on the Google Maps icon?



Great! Google Maps automatically detected Ana’s location, and brought up a map of the area. The map includes a few “pins.” Pins are these upside-down tear drop shapes on the map. The pins show the location of different kinds of locations and attractions. They are different colors depending on the type of location it is.

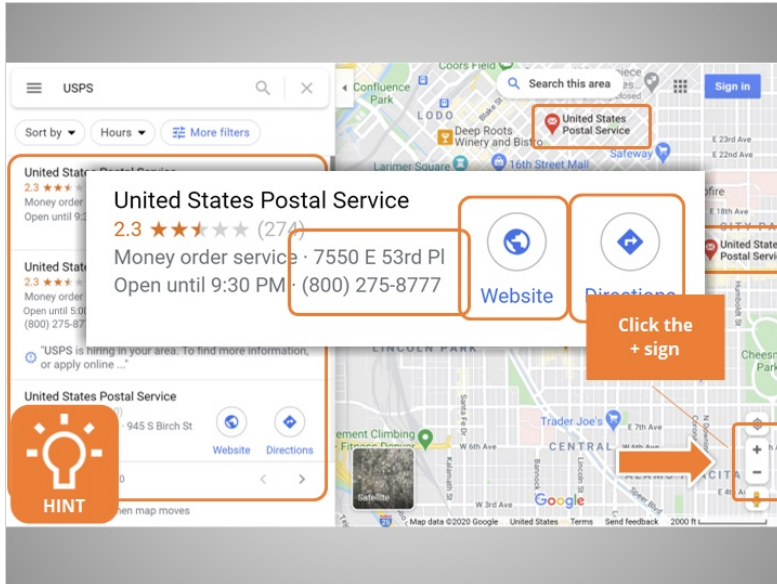


Ana sees a search bar on the top left of the screen. She types in “USPS” and hits enter on her keyboard.

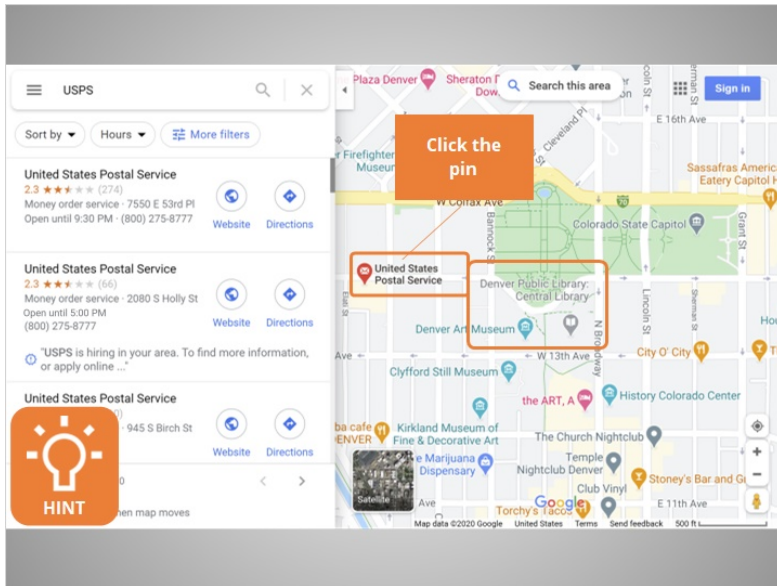


The map now shows a few different red pins where post offices are located in the area. Information on different post office locations shows on the left. Information in this list includes the address and phone number of each location. There’s a link to the website, and a button to get directions.

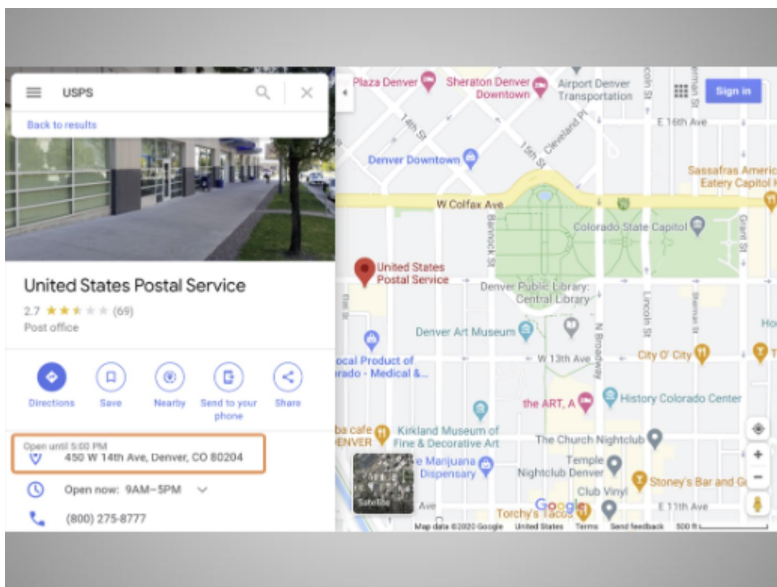
Before getting directions, Ana wants to be sure about which location is closest to her. She can do this using the map.



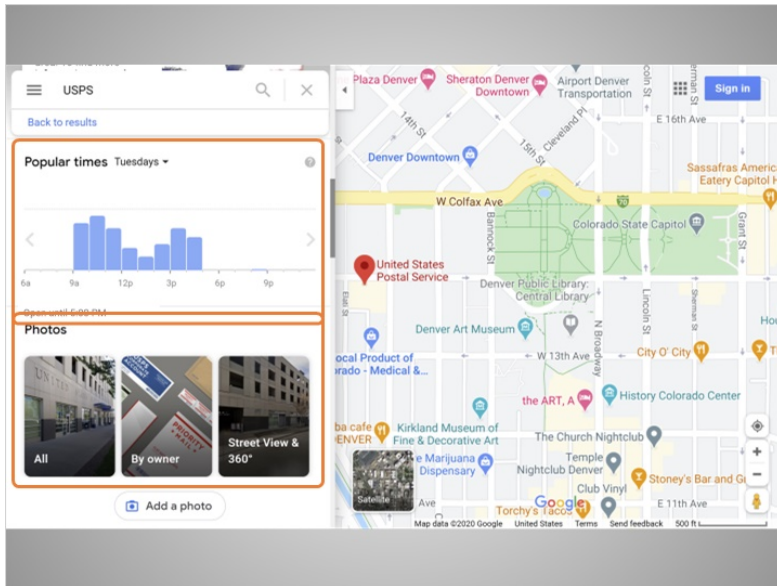
This map is very zoomed out. Ana needs to zoom in to see more detail about the locations. There are buttons to zoom in and out of the map on the bottom right. The plus sign makes the map zoom in closer, and the – sign makes the map zoom out farther. Would you help Ana by clicking on the + button?



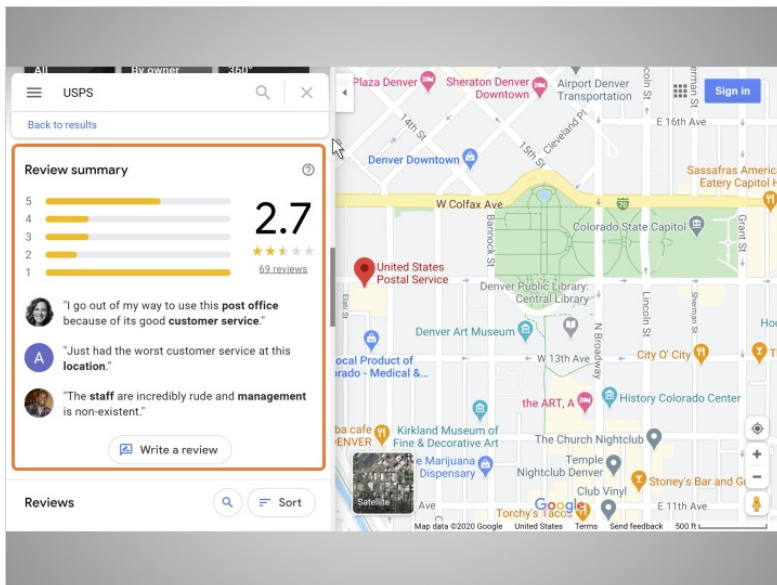
Perfect! Ana can see clearly that this post office is close to her location at the library. She can click on the pin to get more information about this post office location. Would you help Ana and click on the pin for the post office?



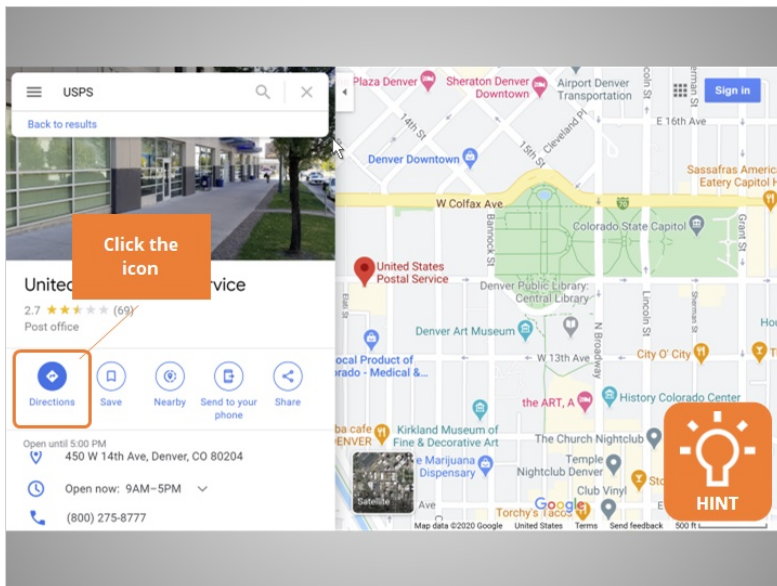
Great! Information on the post office shows on the left. Included is the address, phone number and hours, and an image of the front of the building. Ana scrolls down to see more information, including



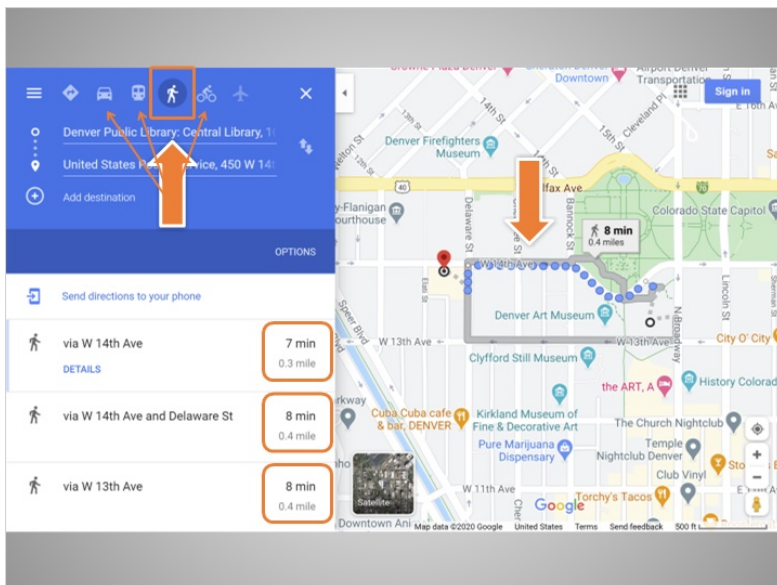
popular times, and photos of the location.



She scrolls further down and sees some reviews by other google users.



Ana scrolls back to the top, because she wants to get directions. To get specific directions to the post office from the library, she needs to click on the Directions icon. Will you click the icon for Ana?



The map has come up with walking directions. To see other transportation options, you can click on these icons for driving directions, public transportation, and bicycling. On the map, you can see three different routes to the post office. In the left panel, there are times listed to walk for each route.



In the next lesson, we'll follow along with Ana as she explores her route to the post office some more.

Click on the green button to end this lesson.